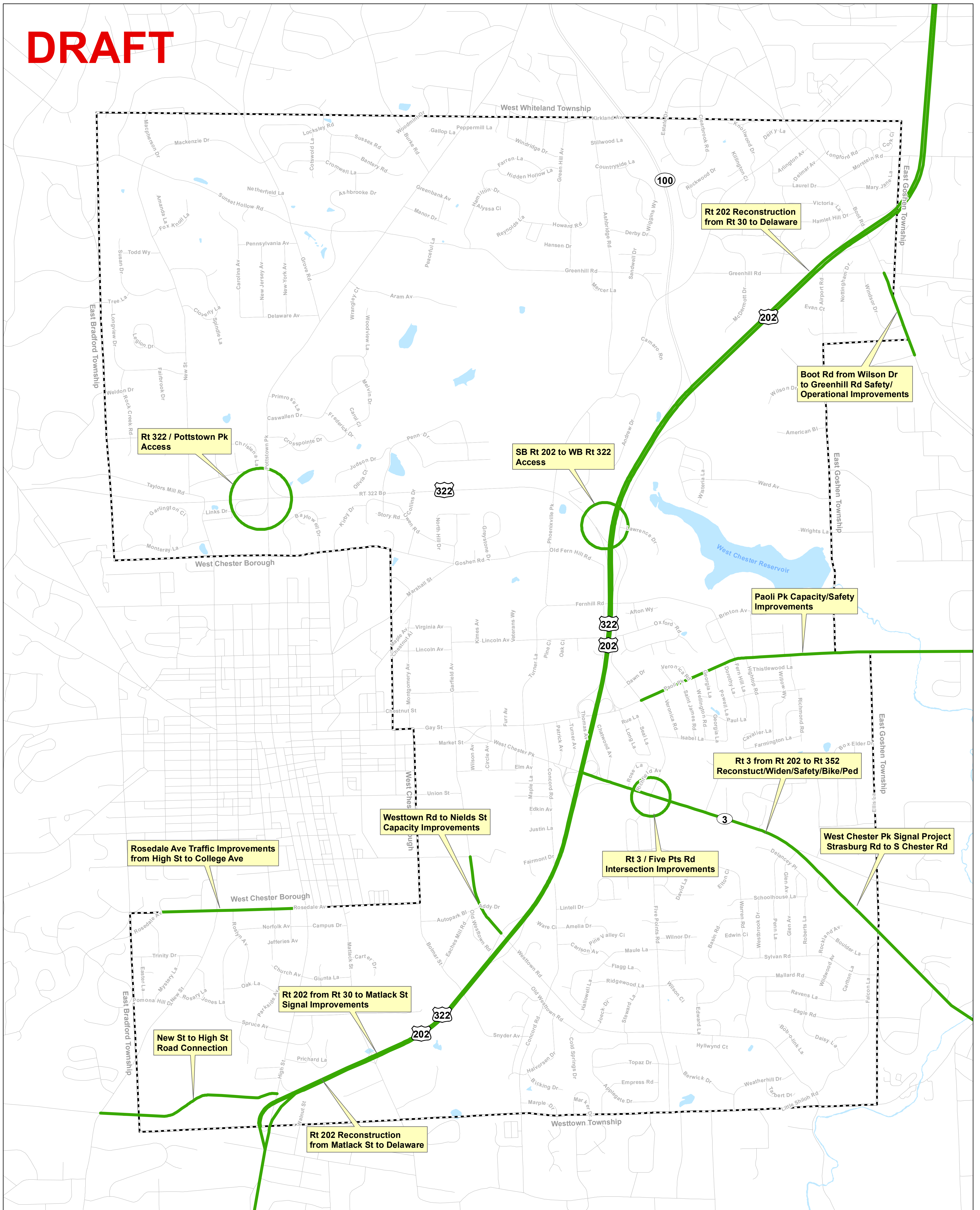


Transportation Improvements on County & DVPRC Plans

West Goshen Township Comprehensive Plan

DRAFT



Legend

 Road/Intersection Improvements



1,000 0 1,000
Feet

Map prepared by:

Sarcinello
Planning & GIS Services

Data Source:
Chester County GIS, 01/2018

Date: January 15, 2019