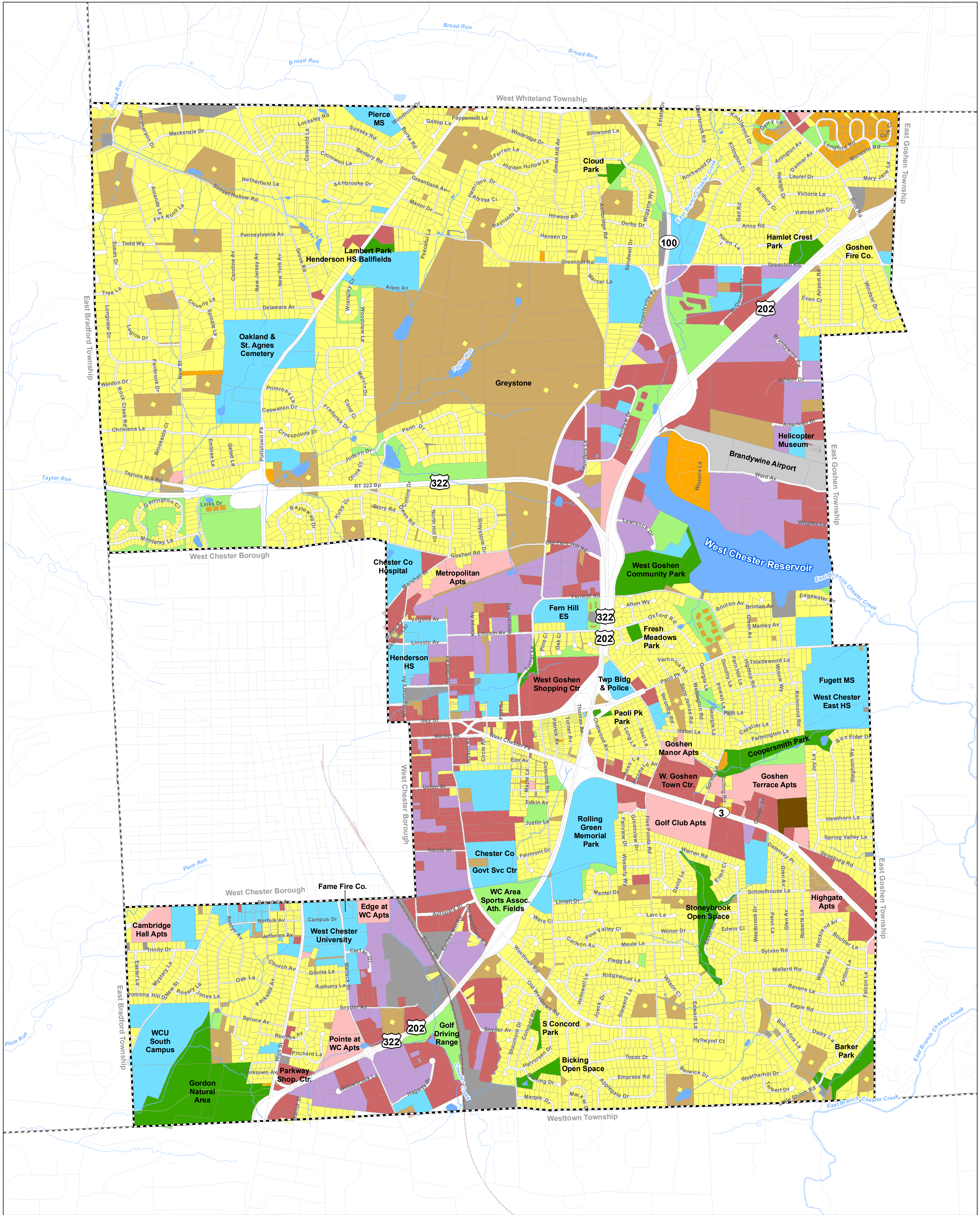


Existing Land Use

West Goshen Township Comprehensive Plan



Legend

Single Family Detached	Institutional
Mobile Home Park	Airport
Twin/Townhouse	Utility
Apartment/Condominium	Public Park/Open Space
Commercial/Office	Private Open Space/Recreation
Industrial/Light Industrial	Vacant/Open/Wooded



1,000 0 1,000
Feet

Data Source:
Chester County GIS, 01/2018
Land use based on County tax
assessment data and aerial
photo interpretation

Map prepared by:

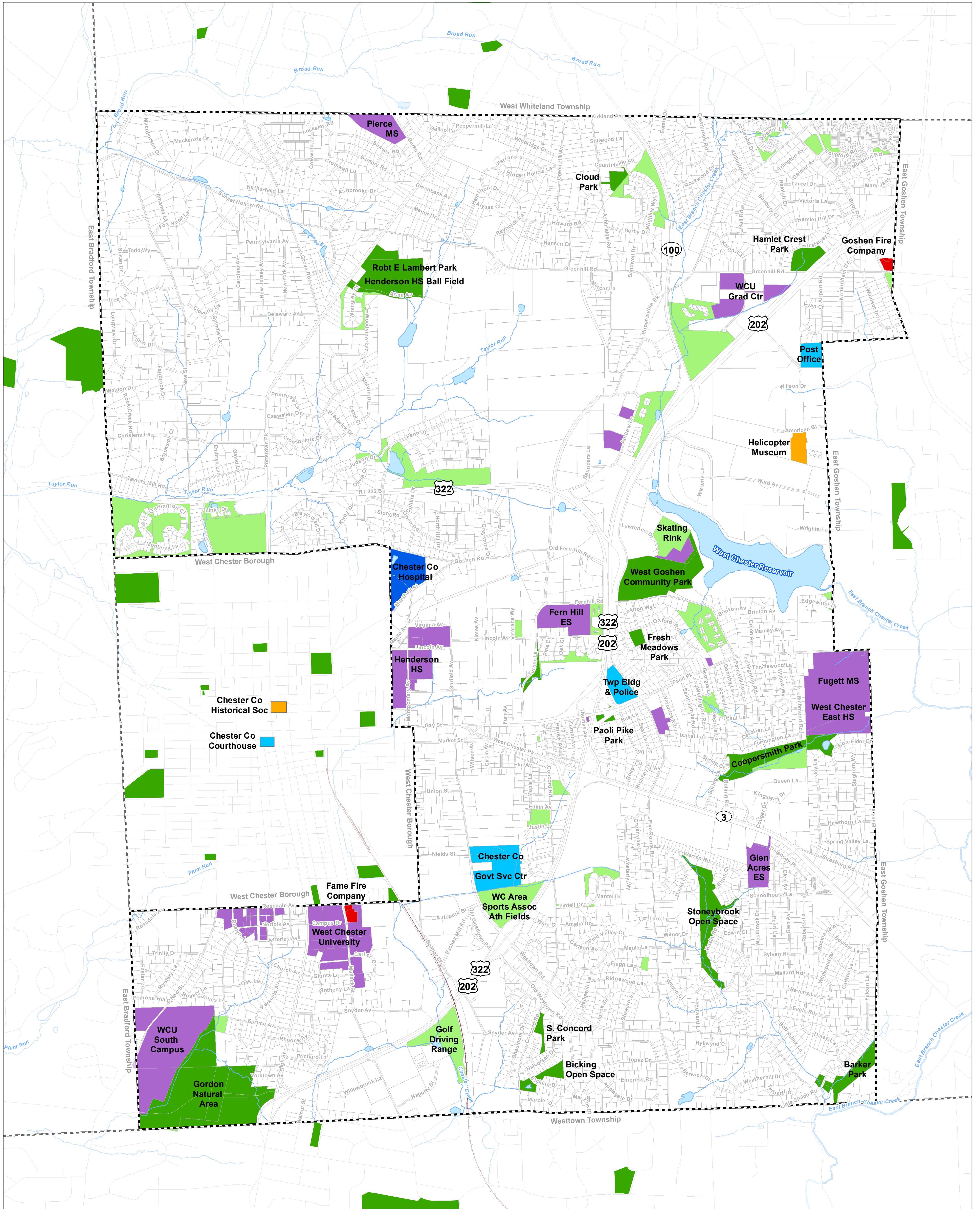
Sarcinello
Planning & GIS Services

Date: March 22, 2019

Disclaimer: This map is intended to be used for reference and illustrative purposes only. This map is not a survey, official tax map or engineering schematic and it is not intended to be used as such. Sarcinello Planning & GIS Services makes no representation as to the accuracy of lines, points, or other features shown on this map, and assumes no liability for use of this map.

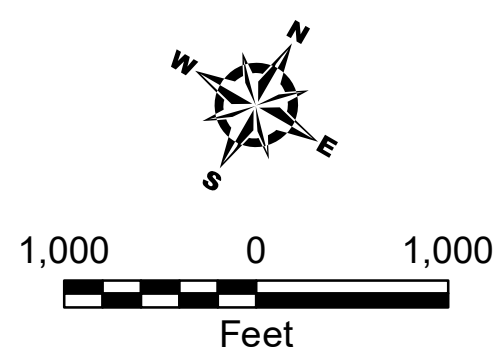
Community Facilities

West Goshen Township Comprehensive Plan



Legend

- Government Services
- Fire Company
- Hospital
- School/University
- Cultural/Museum
- Public Park/Open Space
- Private Open Space/Recreation



Data Source:
Chester County GIS, 01/2018

Map prepared by:

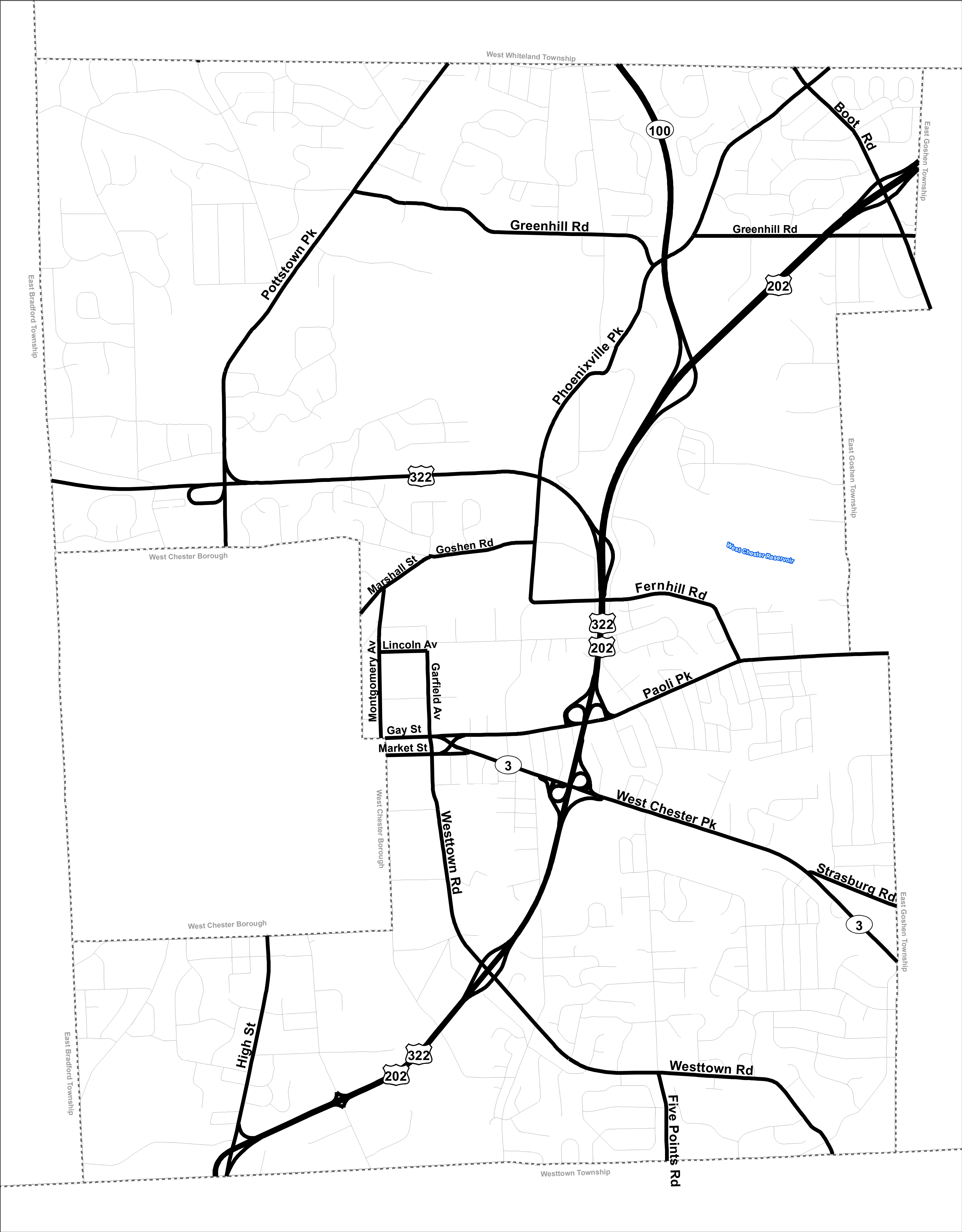
Sarcinello
Planning & GIS Services

Date: March 22, 2019

Disclaimer: This map is intended to be used for reference and illustrative purposes only. This map is not a survey, official tax map or engineering schematic and it is not intended to be used as such. Sarcinello Planning & GIS Services makes no representation as to the accuracy of lines, points, or other features shown on this map, and assumes no liability for use of this map.

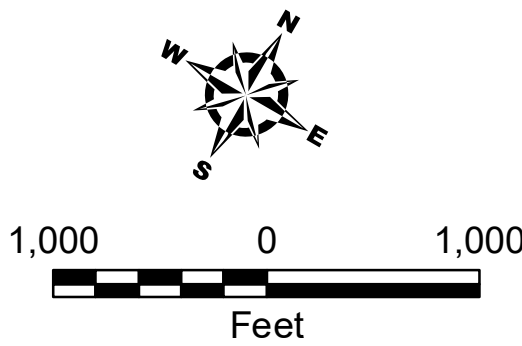
State Roads

West Goshen Township Comprehensive Plan



Legend

- State Roads
- Local Road



Data Source:
Chester County GIS, 01/2018

Map prepared by:

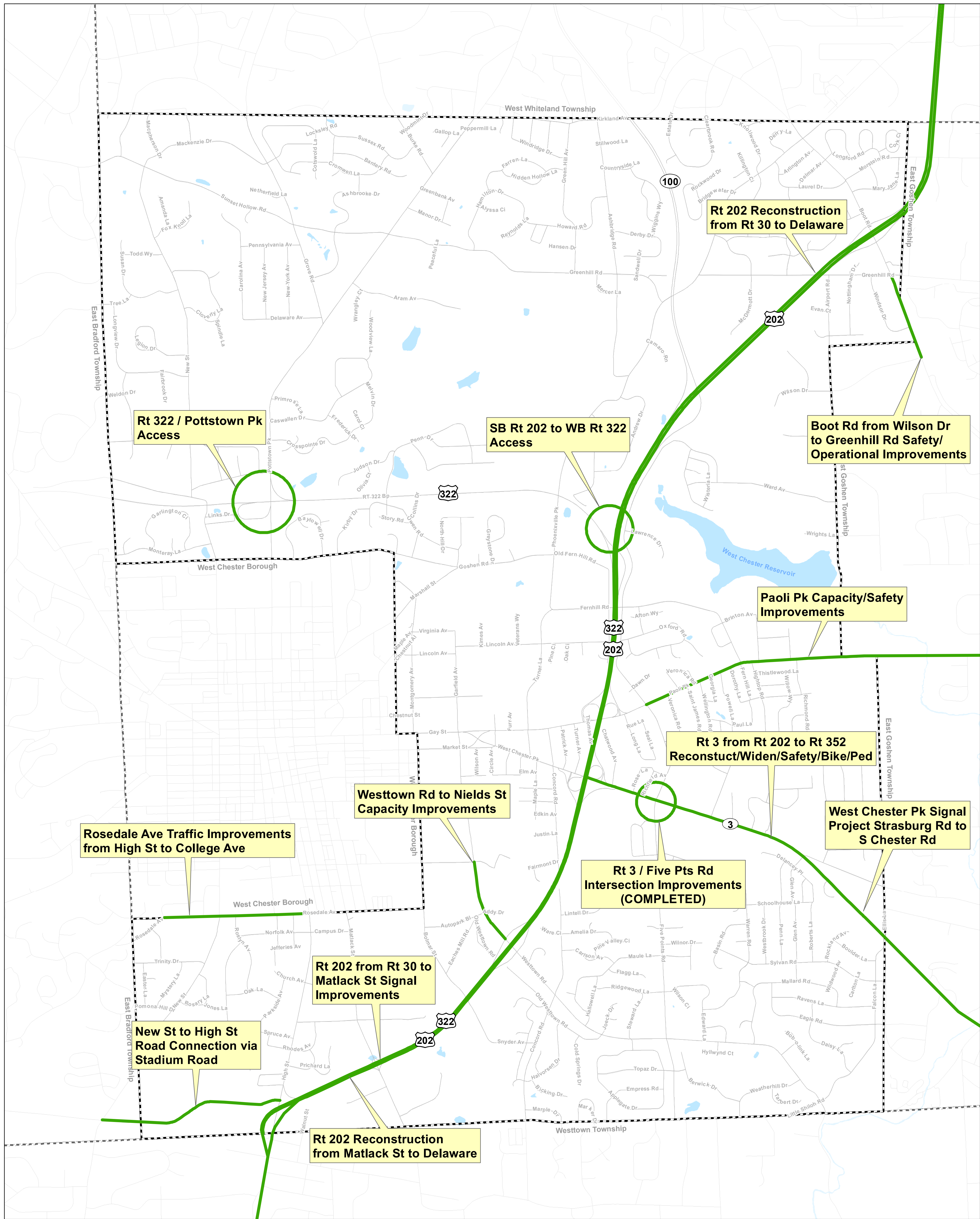
Sarcinello
Planning & GIS Services

Date: March 22, 2019

Disclaimer: This map is intended to be used for reference and illustrative purposes only. This map is not a survey, official tax map or engineering schematic and it is not intended to be used as such. Sarcinello Planning & GIS Services makes no representation as to the accuracy of lines, points, or other features shown on this map, and assumes no liability for use of this map.

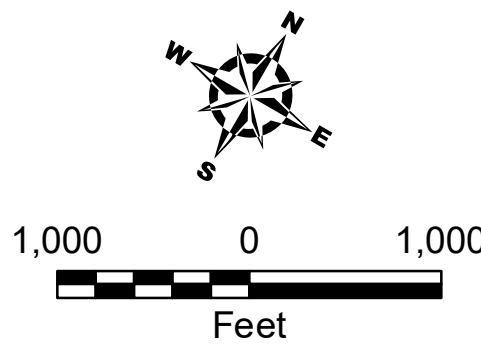
Transportation Improvements on County & DVPRC Plans

West Goshen Township Comprehensive Plan



Legend

 Road/Intersection Improvements



Data Source:
Chester County GIS, 01/2018

Map prepared by:

 **Sarcinello**
Planning & GIS Services

Date: March 22, 2019

Disclaimer: This map is intended to be used for reference and illustrative purposes only. This map is not a survey, official tax map or engineering schematic and it is not intended to be used as such. Sarcinello Planning & GIS Services makes no representation as to the accuracy of lines, points, or other features shown on this map, and assumes no liability for use of this map.